



**SP Diagnostics - [www.spsupport.com](http://www.spsupport.com)**



## **MAT Platform Suite User Guide**

### **Multi-Application Tool**

This guide provides you with information on how to download, install and use your iMAT Suite.

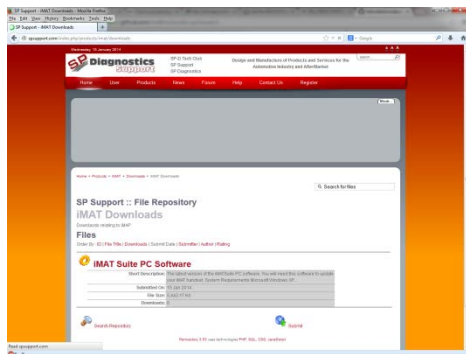
For more guides visit the SP Diagnostics Support website [www.spsupport.com](http://www.spsupport.com) and go to the Products – iMAT – Documents section of the site.

Version 1.001

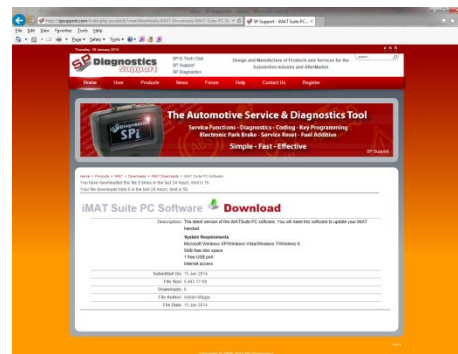
# iMAT Download Application

Follow this procedure to download the latest PC Suite from the <http://www.spsupport.com> website. If you experience any problems then contact Technical Support on **+44 1225 702 104**.

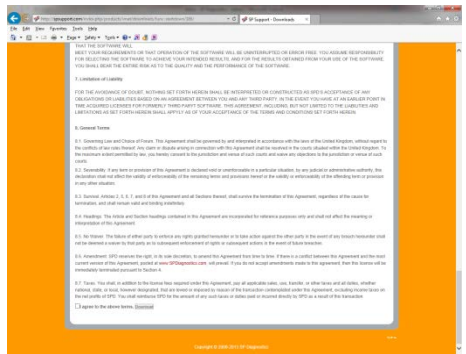
1. Select the **'Download latest software'** from the bottom left of the page.



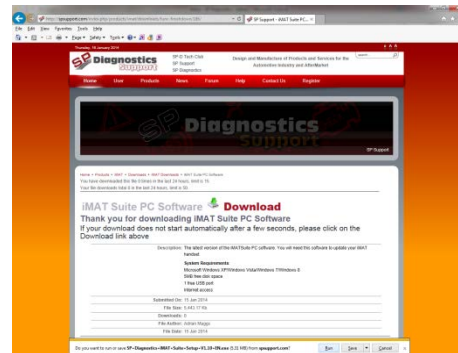
2. Select **'Download'**.



3. Before the application downloads you need to accept the Licence Agreement by ticking the agreement at the bottom and selecting Download again.



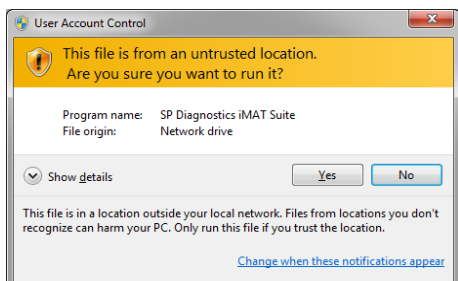
2. Select **'Run'** or **'Save'**. If you Save first then ensure you Run the application before continuing. (browser dependant)



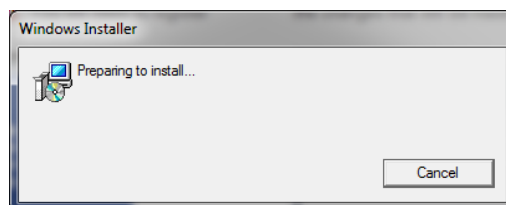
## iMAT Installation Procedure

Follow this procedure if you are installing the iMAT PC Suite for the first time. If you experience problems with the installation then please ensure you have Administrator rights on your PC. If you are still experiencing problems then please use the web form on the Website to contact us.

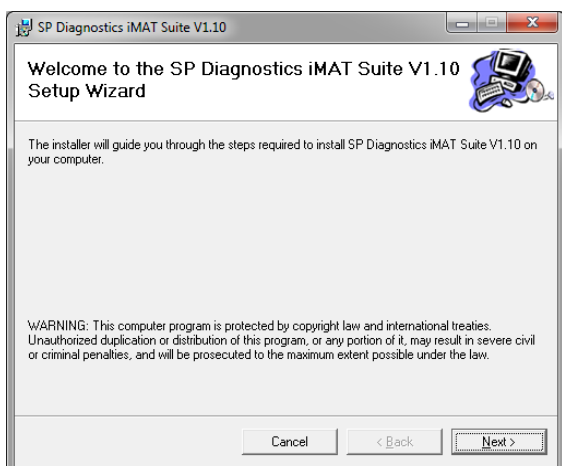
1. When you run the installer you are presented with a User Account Control message warning you that the application you are installing will make changes to your computer.



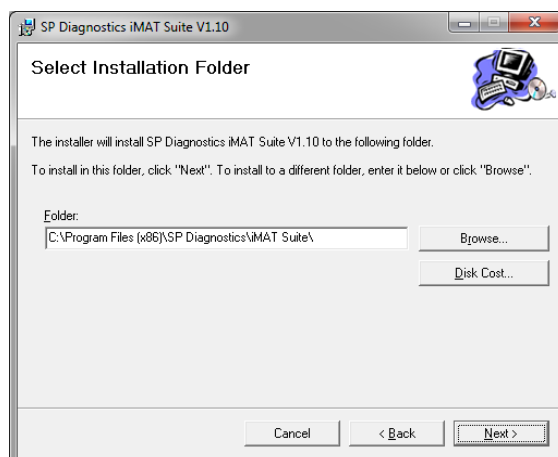
2. Wait while the PC prepares to install.



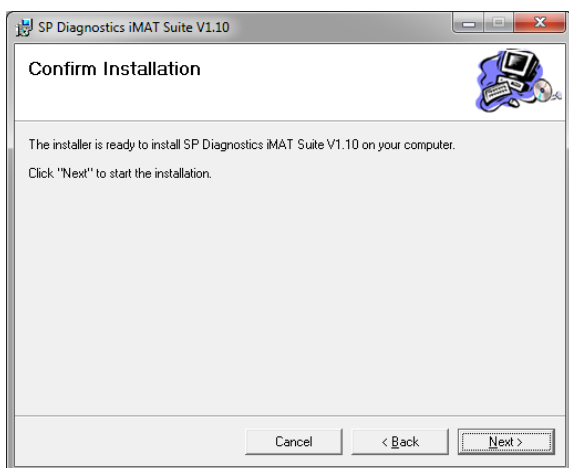
3. After you have run the MAT suite application, the **'Welcome to the SP Diagnostics iMAT Suite'** will be displayed, select **'Next'**.



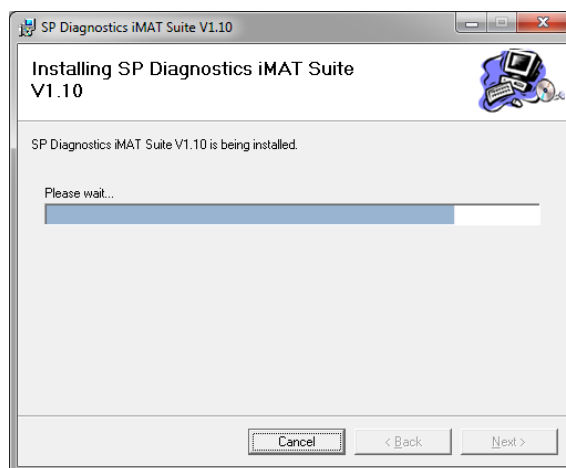
4. The **'Select installation Folder'** screen will appear accept the folder if appropriate and select **'Next'**.



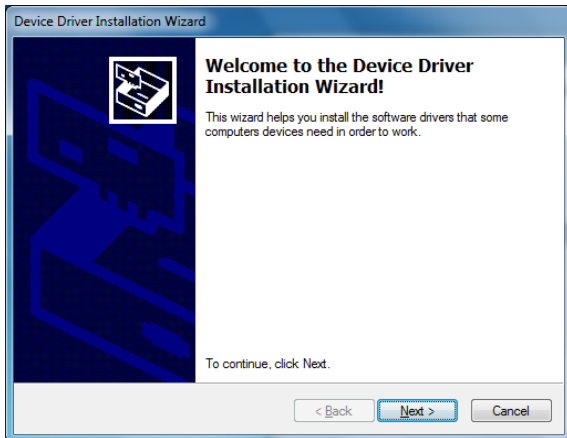
5. When the **'Confirm Installation'** screen appears select **'Next'**.



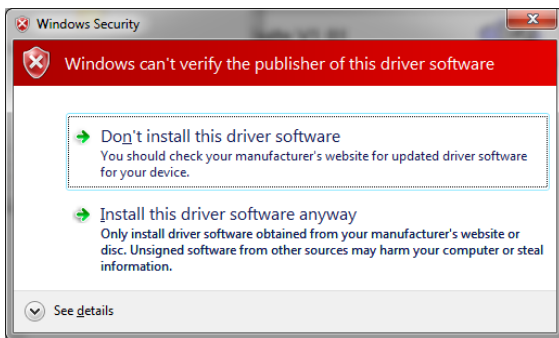
6. The **'Installing SP Diagnostics iMAT Suite'** screen will be launched, once the software has been successfully installed select **'Next'**.



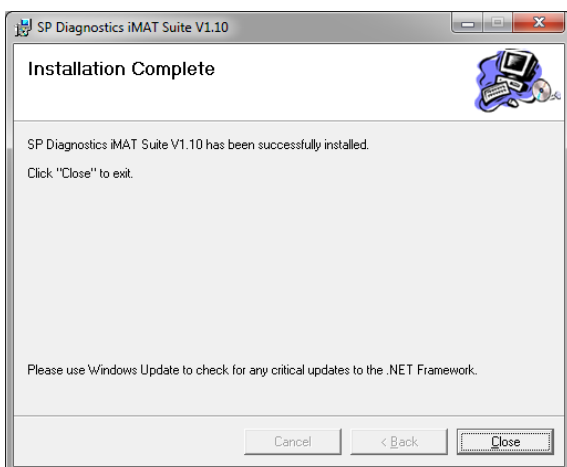
7. As this is the first time that your iMAT has been connected to your PC, the '**Device Driver Installation Wizard**' popup will be displayed.



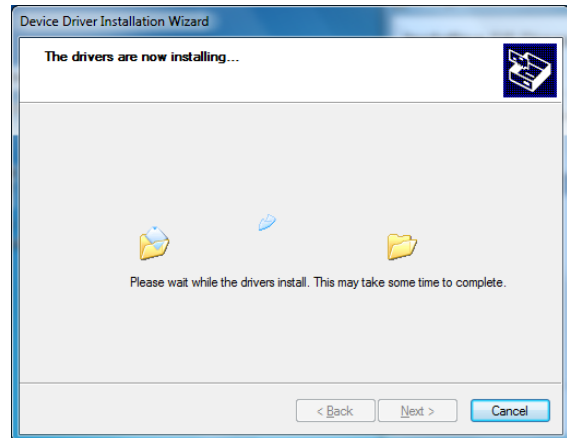
9. Your PC may give you a warning saying the Publisher is unknown. Select '**Install the driver software anyway**' to accept the changes that will be made.



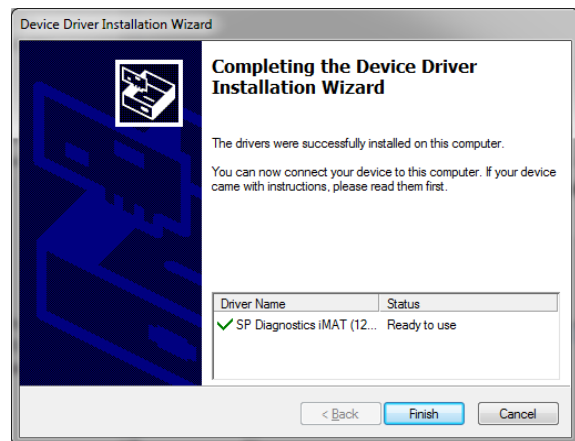
11. You will see the screen '**Installation Complete**' that confirms that the installation was successful, select '**Close**'.



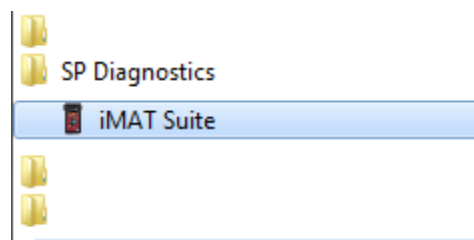
8. The installation will take a short time to complete; the screen below will be displayed during this process.



10. The '**Completing the Device Driver Installation Wizard**' screen is displayed, when your iMAT pod has been detected. Select '**Finish**'.

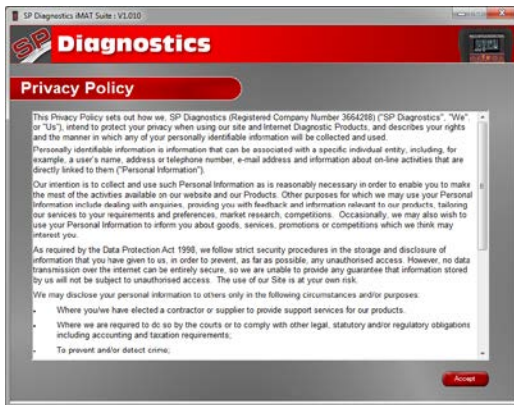


12. Run the MAT Suite Application from the start menu, select '**Start**' – '**Programs**' – '**SP Diagnostics**' – '**iMAT Suite**'. (There will also be an icon installed onto your desktop).

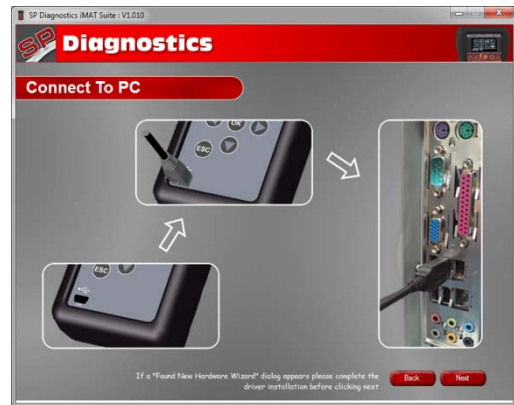


## iMAT Registration Procedure

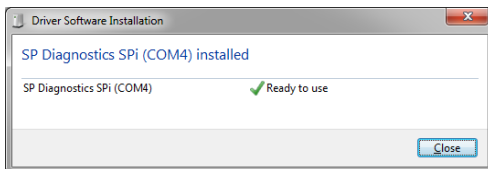
1. Read the Privacy Policy and accept before continuing.



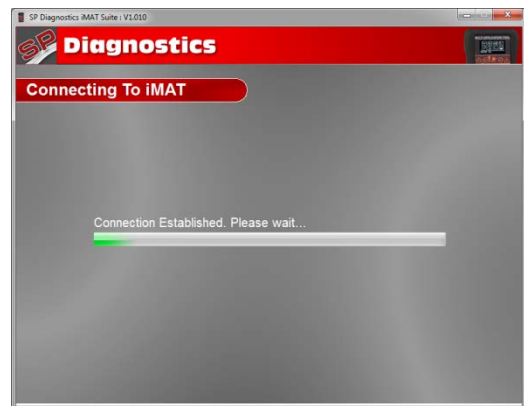
2. Connect the USB supplied to the iMAT and then to a USB port on the PC. Use a main USB port (on the rear of the PC) opposed to an extension (on the front of the PC)



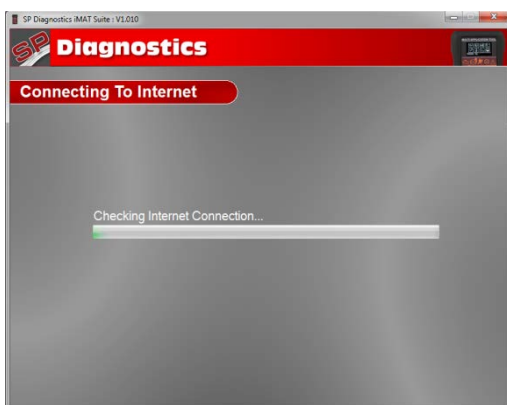
3. The Driver should indicate that it is fully installed and ready to use. If this does not happen, go to the Installing Driver section.



4. When you press the 'Next' button, the iMAT will be detected by the iMAT Suite.



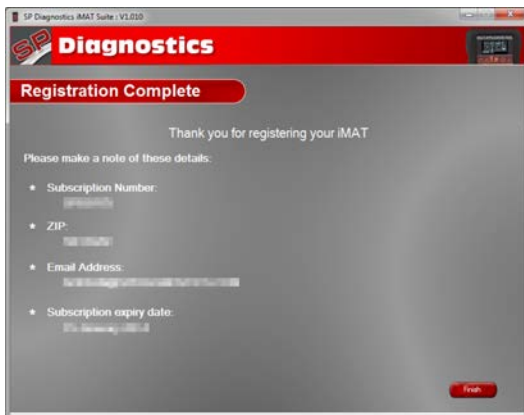
5. The Suite will then check the internet connection is present. If you experience problems at this point you will be directed to the Tests & Checks section of the iMAT Suite.



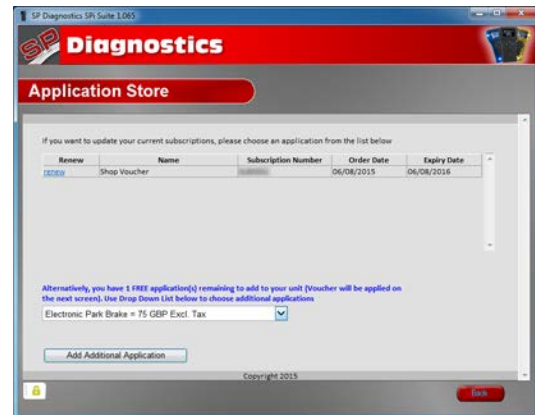
6. Complete the 'Product Registration' ensuring you complete all sections marked with a '\*'. Once complete press the 'Next' button.



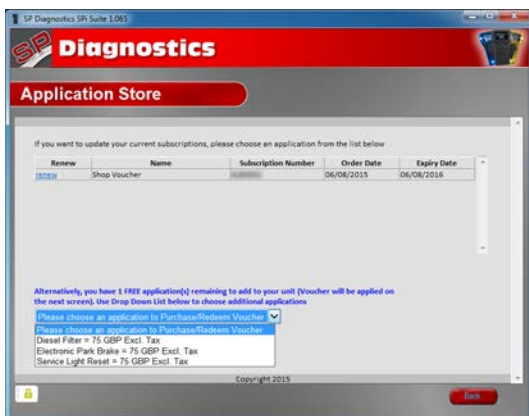
7. Once the information has been submitted, the Subscription Number, Postcode, Email address and subscription expiry date will be displayed back. Although these details are stored on your PC, It would be worthwhile making a note of these details in case you require them in the future.



8. When used for the first time, the suite will direct you to the Application Store.



9. You can use your free voucher to redeem an application of your choosing. Select '**Add Additional Application**' to continue your purchase.



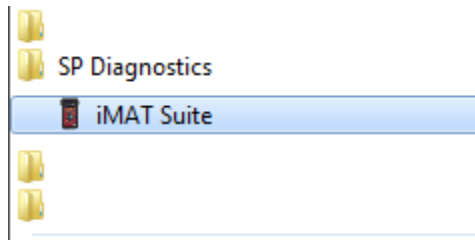
10. Select '**Confirm**' to complete the redemption.



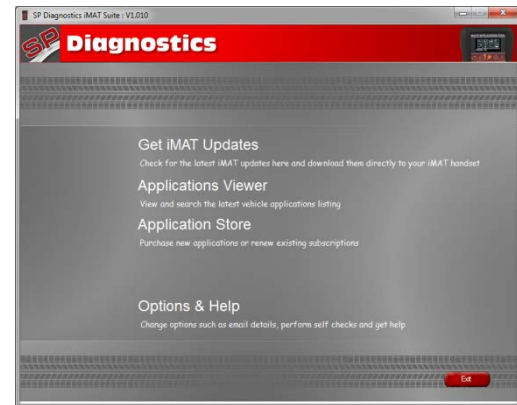
## iMAT Update Procedure

### 1. Run the iMAT Suite Application

From the start menu, select '**Start**' – '**All Programs**' – '**SP Diagnostics**' – '**iMAT Suite**'. (There will also be an icon installed onto your desktop).



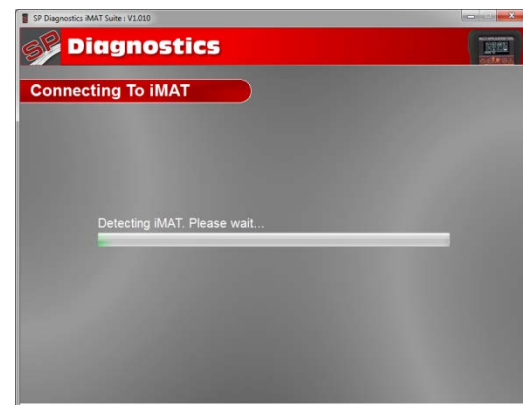
### 2. Select the option '**Get iMAT Updates**'.



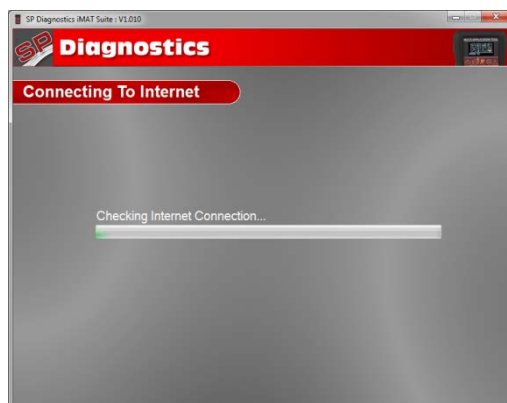
### 3. Connect the USB supplied to the iMAT and then to a USB port on the PC. Use a main USB port (on the rear of the PC) opposed to an extension (on the front of the PC)



### 4. When you press the '**Next**' button, the iMAT will be detected by the iMAT Suite.



### 5. The Suite will then check the internet connection is present. If you experience problems at this point you will be directed to the Tests & Checks section of the iMAT Suite.

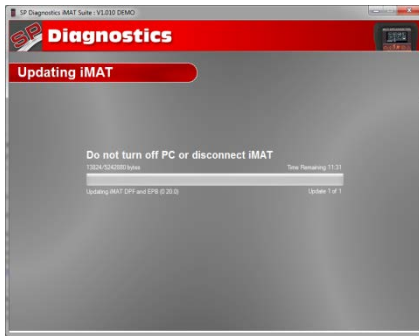


### 6. Select '**Download**' to update your tool to the latest version. A description of the updates will also be shown on screen.





7. The Suite will start to update the tool with the latest software.



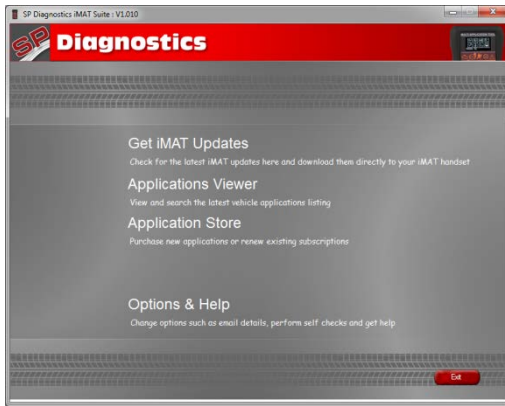
8. Once complete a message will be displayed on the screen allowing you to then go back to the main menu.



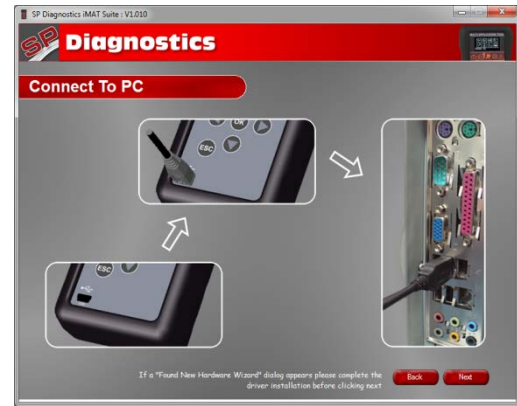


## Purchasing Additional Applications

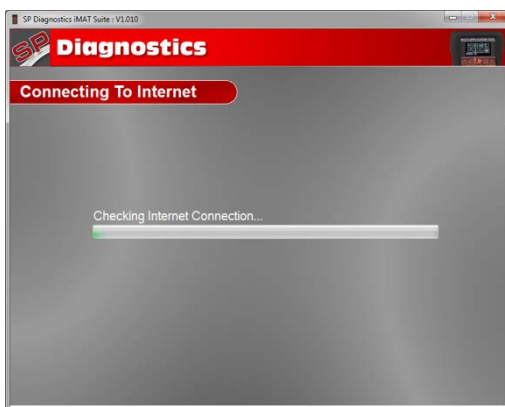
1. Select 'Application Store'.



2. Connect your handset to the PC as directed.



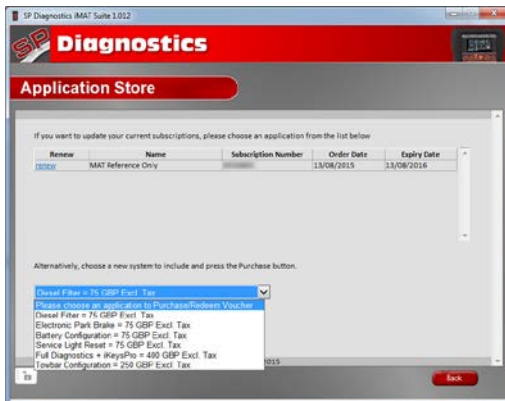
3. The suite will connect to the Application Store.



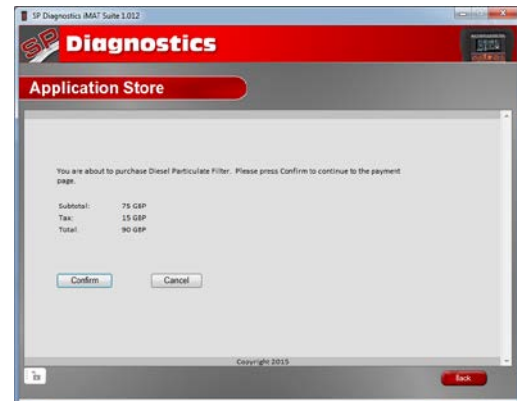
4. A page similar to the one below will be displayed.



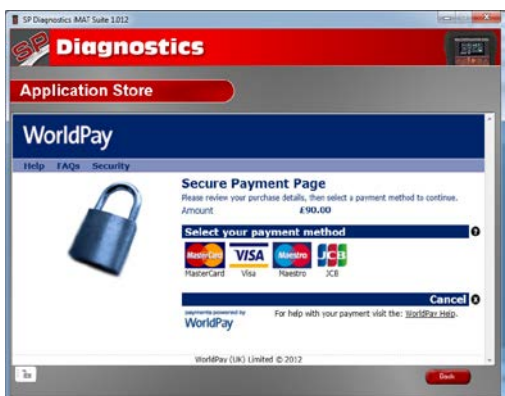
5. From the drop down menu, select the application you wish to purchase, then select 'Purchase'.



6. Select 'Confirm'.



7. You will be directed to the payment page. Select the type of card you will be making the payment with.



8a. Enter your details as required.



**8b.** Once all the correct information has been entered, select '**Make Payment**'.

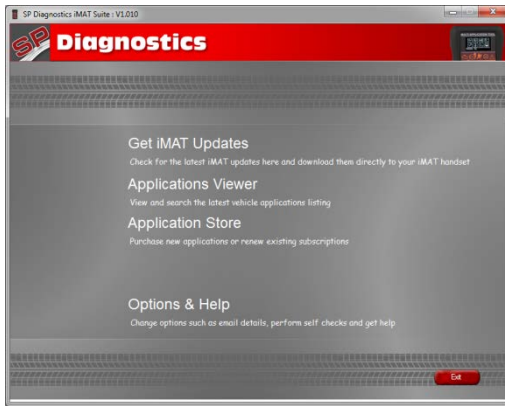
The screenshot shows the 'Application Store' window of the SP Diagnostics MMT Suite 1.012. The 'cardholder details' section is active, displaying a form with the following fields: Address 1, Address 2, Address 3, Town/City, Region, Postcode/ZIP code, Country (set to United Kingdom), Telephone, Fax, and Email address. At the bottom of the form, there are three buttons: 'Start again', 'Cancel', and 'Make payment' (which is highlighted with a checkmark). The bottom of the window shows the copyright notice 'Worldplay (UK) Limited © 2012' and a 'Back' button.

**9.** You will be directed to the payment confirmation page.

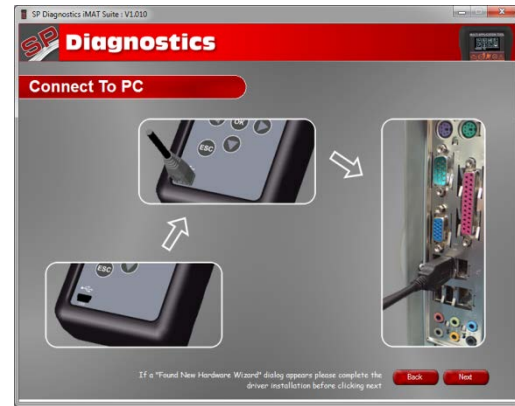
The screenshot shows the 'Application Store' window of the SP Diagnostics MMT Suite 1.012, displaying the payment confirmation page. The page shows the following transaction details: Transaction Status: Payment Authorised, Amount Processed: £190.00, Customer Name: SP Diagnostics, Transaction ID: 3030252436, and Card ID: 782015939190144532. At the bottom of the page, there are two buttons: 'Make Another Purchase' and 'Exit Shop'. The bottom of the window shows the copyright notice 'Copyright 2015' and a 'Back' button.

# Renewing Application Subscriptions

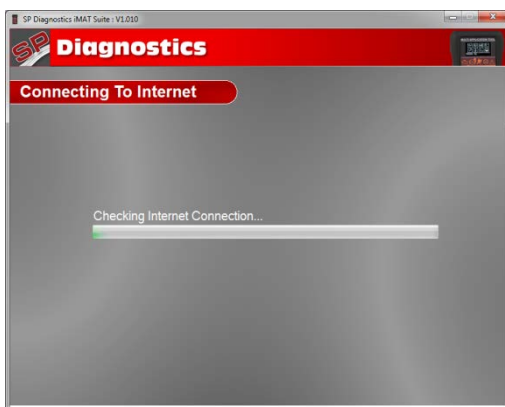
1. Select 'Application Store'.



2. Connect your handset to the PC as directed



3. The suite will connect to the Application Store.



4. You will see a screen similar to the one below.



5. Select 'Confirm'.



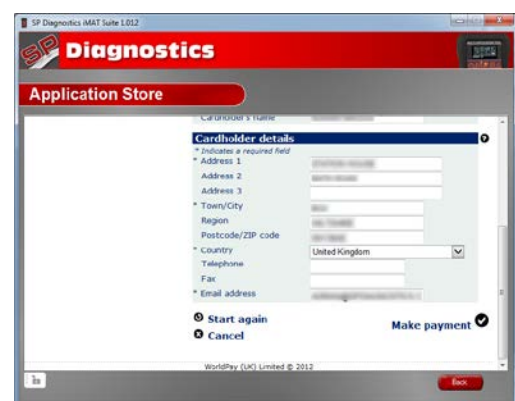
6. You will be directed to the payment page, select the type of card you will be making the payment with.



7a. Enter your details as required.



7b. Once all the required information has been entered, select 'Make Payment'.

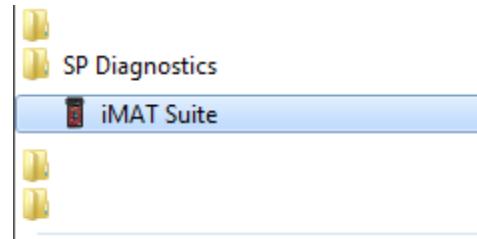


8. You will be directed to the payment confirmation page.

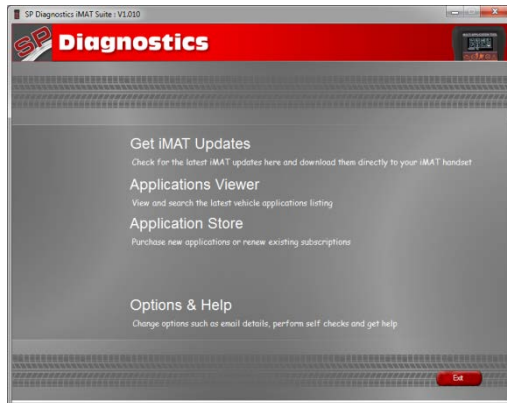


## Options

1. Run the iMAT Suite Application from the start menu select **'Start' – 'All Programs' – 'SP Diagnostics' – 'iMAT Suite'**. (There will also be an icon installed onto your desktop).



2. Select **'Options'** from the menu.

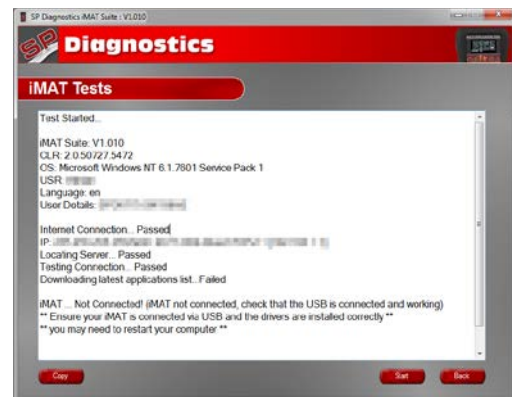
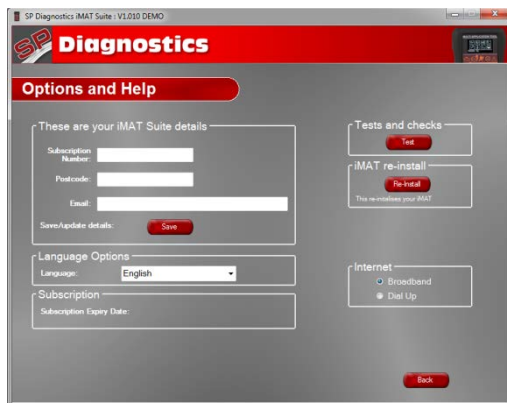


3. If you are advised to change your **Subscription Number & Postcode** you can do this from here.

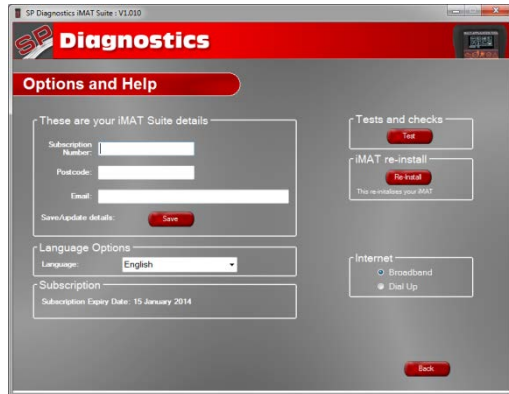


4. Selecting the **'Tests and checks'** button allows you to perform tests to verify that your iMAT is functioning correctly and that you are able to connect to the website and download the latest software.

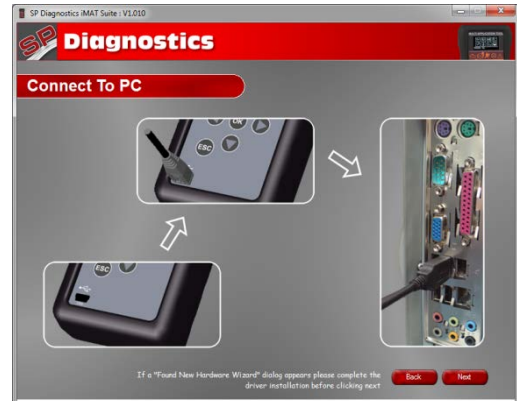
5. You will be asked to perform these tests if you experience problems and need to contact a customer services representative or engineer. This information is also reported back to the website in order for the engineer to assist you in resolving your problem.



6. Selecting the **'iMAT re-install'** button allows you to force the iMAT to download your latest update again. This can be used if you think there is a problem with your last update.



7. Connect your iMAT as per the instructions within the iMAT update suite. Connect mini USB to iMAT and USB to PC. Refer to the **'iMAT Update Procedure'** for more information.









Unit 2 Atworth Business Park, Atworth Melksham, Wiltshire, SN12 8SB, UK  
Sales & Customer Services: + 44 (0)1225 702 104      Facsimile: + 44 (0)8700 941753  
Email: [sales@spdiagnostics.com](mailto:sales@spdiagnostics.com)      Email: [support@spdiagnostics.com](mailto:support@spdiagnostics.com)  
[www.spdiagnostics.com](http://www.spdiagnostics.com)      [www.spsupport.com](http://www.spsupport.com)